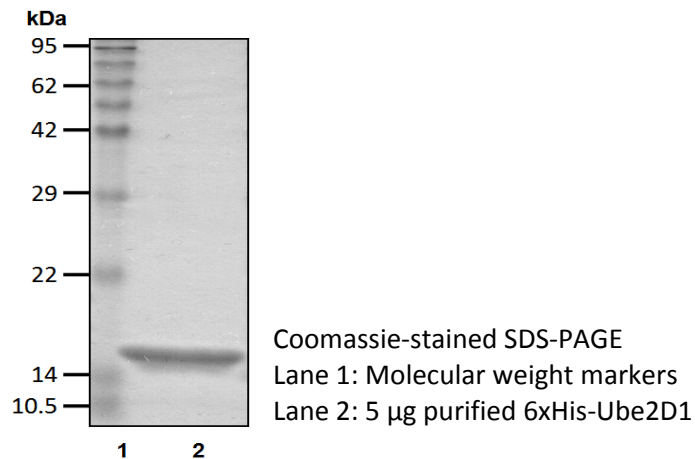


# 6xHis-Ube2D1 (Ubch5A)

Cat. # C1400, C1401

**Also Known as:** USFT; UBCH5; UBC4/5; UBCH5A; E2(17)KB1  
**NCBI Reference:** NM\_003338  
**MW (no tag):** 16.6 kDa  
**Species:** Human  
**Source:** Bacterial recombinant  
**Tag:** 6xHis  
**Stock Buffer:** 20 mM Tris, 150 mM NaCl, 2 mM  $\beta$ ME, 10% Glycerol  
**Concentration:** See tube label  
**Quality Assurance:** ~95% by SDS-PAGE

## Image



## Description:

Ube2D1 is an E2 enzyme, which is part of the E1, E2, and E3 cascade responsible for ubiquitination of protein substrates. Two other homologues of Ube2D1 exist called Ube2D2 and Ube2D3. Ube2D2 is 89% identical to the amino acid sequence of Ube2D1 and Ube2D3 is 88% identical. Ube2D1 has been linked to cadmium toxicity. It might also play a role in LDL cholesterol receptor ubiquitination in an Idol-dependent fashion.

## Storage:

Store at -80°C; avoid multiple freeze-thaw cycles

## Note:

N/A

## Literature:

1. Scheffner M, *et al.* (1994) Proc Natl Acad Sci USA 91, 8797–8801.
2. Huibregtse JM, *et al.* (1995) Proc Natl Acad Sci USA 92(7), 2563 – 2567.
3. Gehrke SG, *et al.* (2003) Blood 101, 3288 – 3293.
4. Tokumoto M, *et al.* (2011) J Toxicol Sci 36(2), 191 – 200.

